

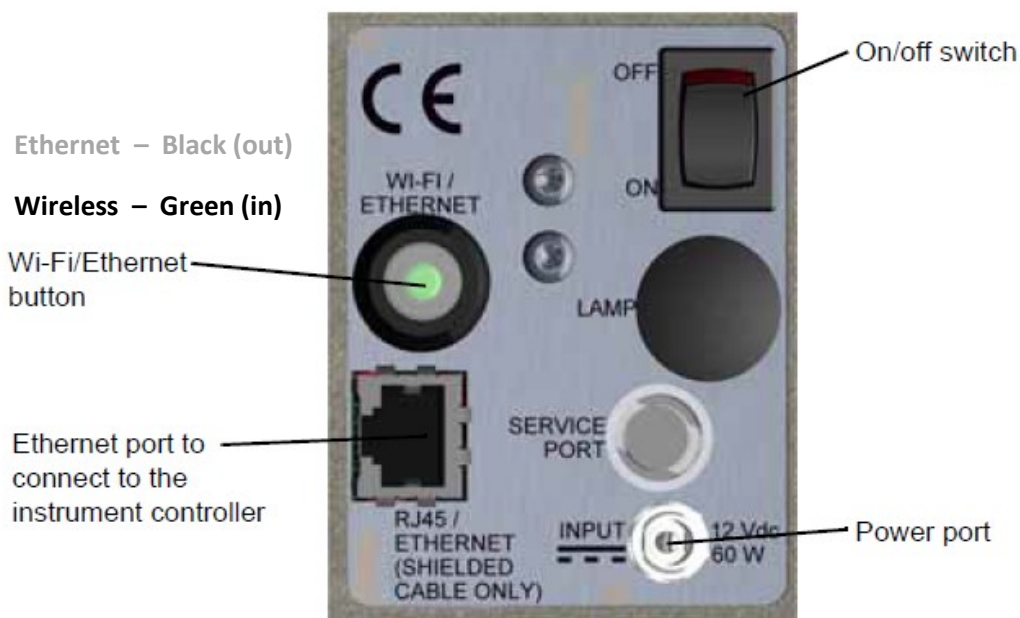
*FSF User Guide:-*

**ASD FS4 (s/n 18454) Wireless Interface Guide**

**Doc. No.** 200-023  
**Version:** 2 (2018)  
**Author:** Jack Gillespie

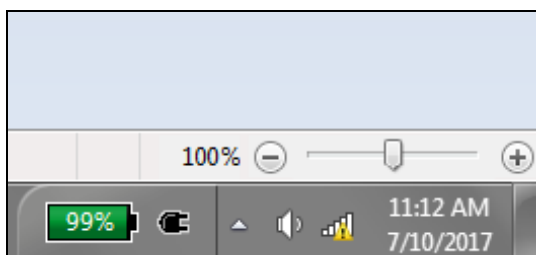
The ASD FS4 field spectroradiometer can be configured to connect to the laptop computer via the Wireless or Ethernet network interfaces. This guide will detail the optimal sequence for a successful wireless connection.

- Check Wi-Fi / Ethernet button on the rear panel of the spectroradiometer is IN with a green dot in its centre. Press to change as necessary.
- Switch on ASD FS4 spectroradiometer.

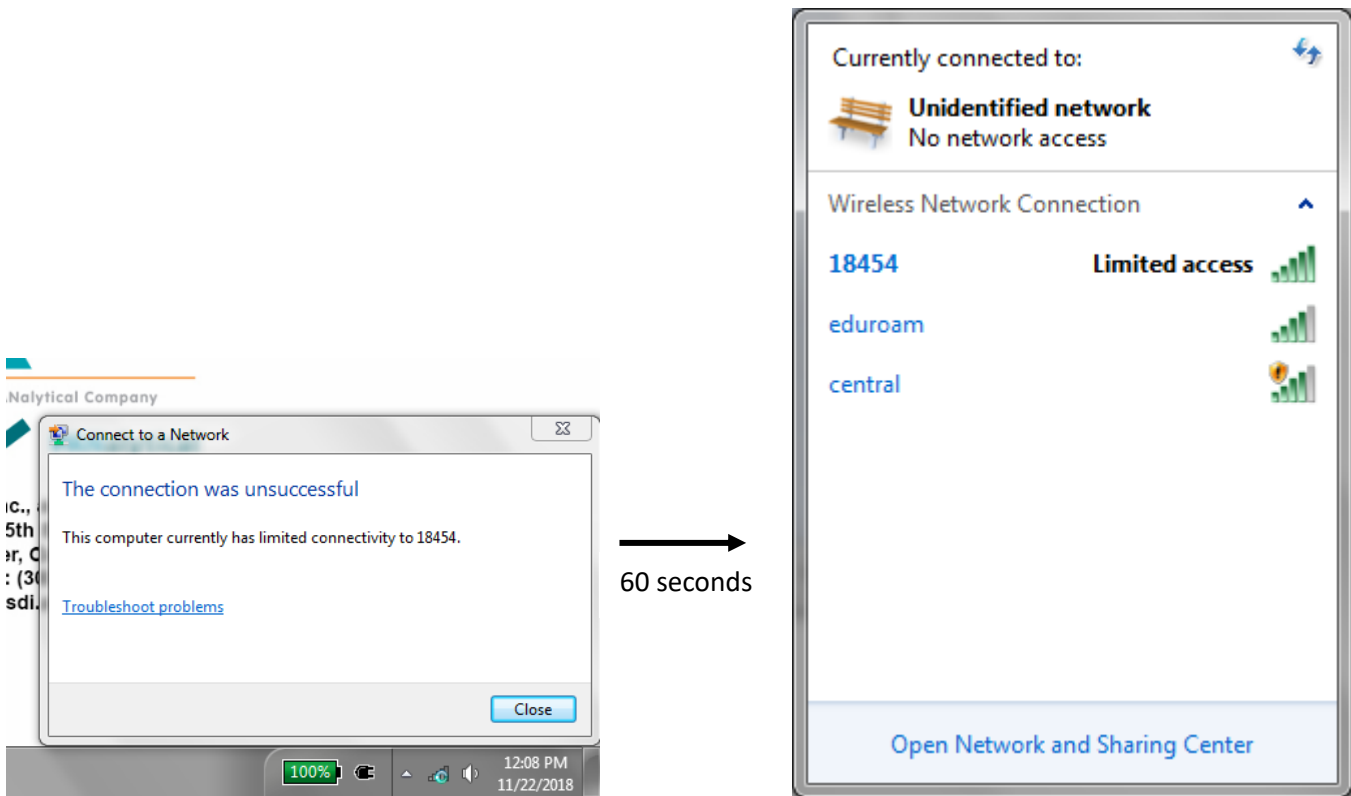


Please note: the ASD Wi-Fi will still broadcast EVEN IN ETHERNET MODE, but connection will be unsuccessful in RS<sup>3</sup>.

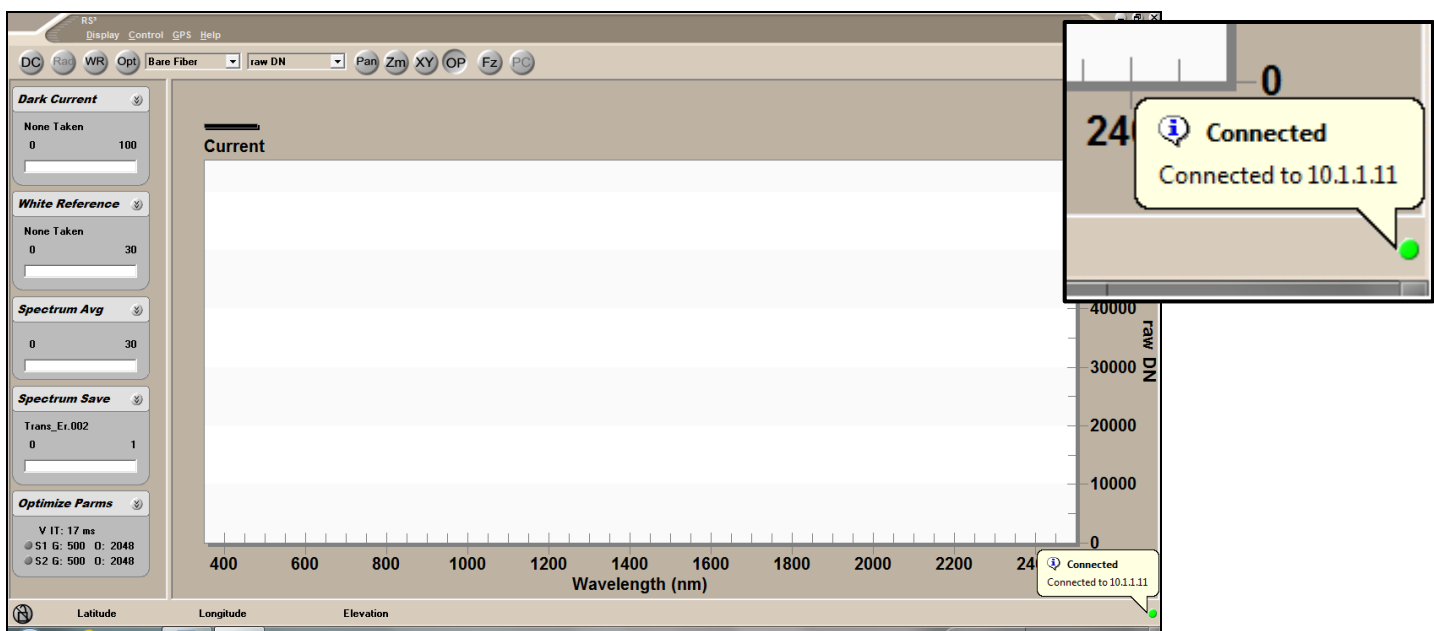
Start-up laptop computer and allow the Wireless interface to automatically connect. Note the icon on the task bar will show a warning triangle. This is normal, as the interface does not give internet access. *"Unidentified network - No Internet access"*



- Click on Wireless icon. The wireless network will show a connection to 18454 (the serial number of the ASD FS4 spectroradiometer). Initially, the wireless network may state that the connection has been “unsuccessful”.
- **Wait for approximately 60s**, after which the network is shown to have “Limited access”.



- Run RS<sup>3</sup> application. Note two balloon dialogs in the lower right of the screen will show the application searching and connecting to the spectroradiometer with a green indicator spot on the status bar. The indicator spot will change to yellow and red if the distance between the computer and spectroradiometer exceeds the range of the Wi-Fi signal.



Please do not adjust any settings, ports, or install any software on the Laptop.